

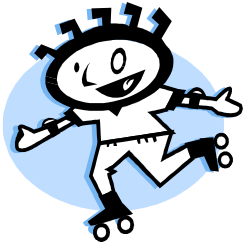
## Bayview Park & Beach

Bayview Park is at the east end of town, across from Pamida.

It includes a life guarded swimming beach with a diving board, pavilion and a playground with restrooms.

## Central Railyard Park

Central Railyard Park, is located in the Heart of Ashland behind the Depot, the Civic Center and the Bretting Community Center. This park has a playground, skatepark, tennis courts and baseball fields.



## Kreher Park & Beach

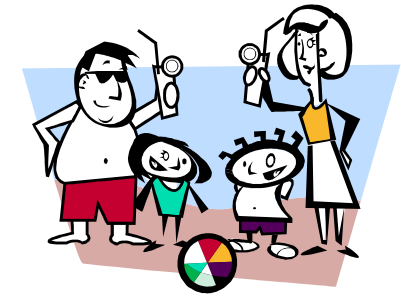
Kreher Park is located at the foot of Prentice Ave, on the lakeshore near the Ashland Marina.

It features: boat landing, playground, swimming beach with life guards, fishing pier, showers & restrooms with flush toilets, pavilion with picnic tables, and electricity.



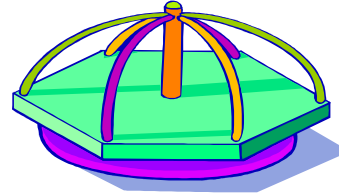
## Masłowski Park & Beach

Masłowski Park is located at the western city limits, on the lakefront, as you travel along Hwy 2. This park includes a beautiful swimming beach (with no life guards), a playground, volleyball net, restrooms, pavilion and an artesian well.



## Plaza Park

Plaza Park, *Ashland's newest park*, is the gateway to the water front trail and downtown Ashland. This park is a must see! With great seating, restrooms, and walking distance to downtown and the lakefront.



## Prentice Park is Ashland's Largest Park

with 100 acres

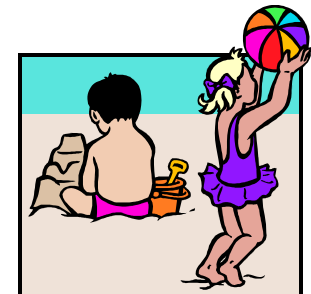
Prentice Park is located at the western city limits. Turn south on Turner Road, off Hwy 2. It Features: restrooms with flushing toilets, walking trail, artesian well, playground, two pavilions with picnic tables and electricity.

Washburn Also has some  
great Beaches

West End Park

&

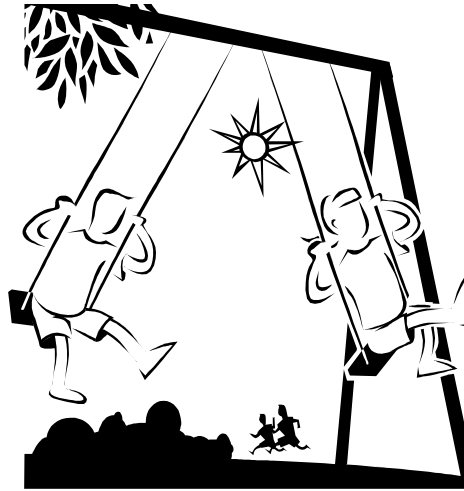
Friendly Valley Way



**Ashland has a variety of  
Parks & beaches for our  
visitors enjoyment.**

**Many of our parks contain;  
new play playgrounds,  
some swimming beaches,  
restrooms and a skatepark.**

**Many of the parks have  
pavilions and they can be  
reserved by calling  
Ashland Public Works  
at 715-682-7061**



This brochure is brought to you by,  
Ashland Area Chamber of Commerce  
805 Lake Shore Drive  
Ashland, WI 54806

682-2500  
800-284-9404  
ashchamb@centurytel.net

# Ashland City Parks & Beaches

**Fun for the whole family!**