

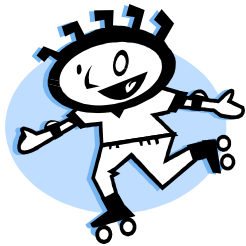
Bayview Park & Beach

Bayview Park is at the east end of Ashland.

It includes a swimming beach with a high diving board, pavilion and a playground with restrooms and access to the Waterfront Trail.

Central Railyard Park

Central Railyard Park is located in the Heart of Ashland behind the Depot, the Civic Center and the Bretting Community Center. This park has a playground, skatepark, tennis courts and baseball fields with access to the Waterfront Trail.



Kreher Park & Beach

Kreher Park is located at the foot of Prentice Avenue, on the lakeshore near the Ashland Marina.

It features: boat landing, playground, swimming beach, fishing pier, showers & restrooms with flush toilets, pavilion with picnic tables, and electricity.

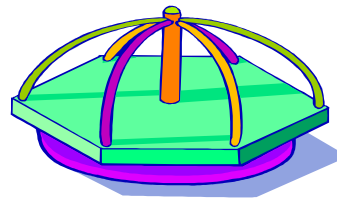


Maslowski Park & Beach

Maslowski Park is located at the western city limits, on the lakefront, as you travel along Hwy 2. This park includes a beautiful swimming beach, a playground, restrooms, pavilion, an artesian well and access to the Waterfront Trail.

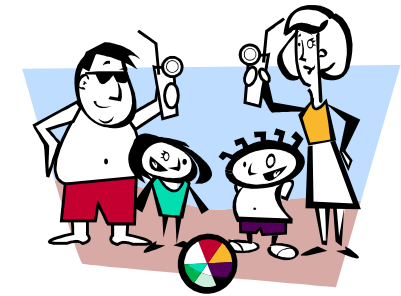
Pearson Plaza Park

Plaza Park, Ashland's newest park, is the gateway to the Waterfront Trail and downtown Ashland. This park is a must-see! It offers great seating, restrooms, and is within walking distance to downtown and the lakefront.



Prentice Park is Ashland's largest park with 100 acres

Prentice Park is located at the western city limits. Turn south on Turner Road, off Hwy 2. It features: restrooms with flushing toilets, walking trails, artesian well, playground, two pavilions with picnic tables and electricity.

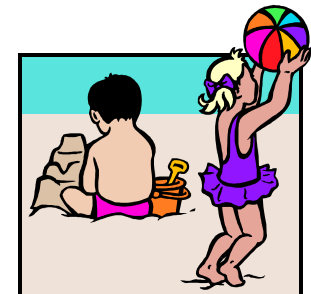


Washburn also has some
great beaches:

West End Park

&

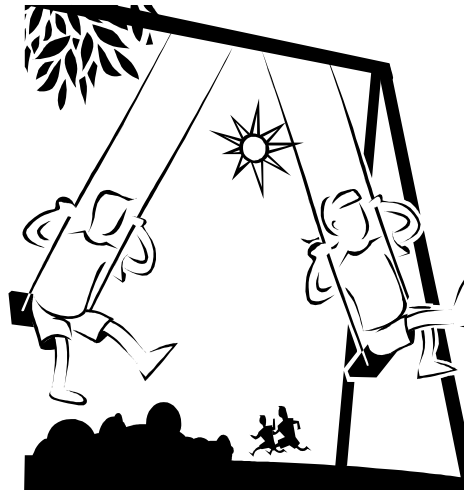
Friendly Valley Way



Ashland has a variety of parks & beaches for our Visitors' enjoyment.

Many of our parks contain:
new playgrounds,
some swimming beaches,
restrooms and a skatepark.

Many of the parks have pavilions and they can be reserved by calling Ashland Parks & Rec at 715-682-7059.



Ashland
City
Parks
&
Beaches

Find yourself next to the water.

ASHLAND

visitashland.com WISCONSIN

This brochure is brought to you by,
Ashland Area Chamber of Commerce
1716 West Lake Shore Drive
Ashland, WI 54806

715-682-2500
info@visitashland.com

Fun for the whole family!

